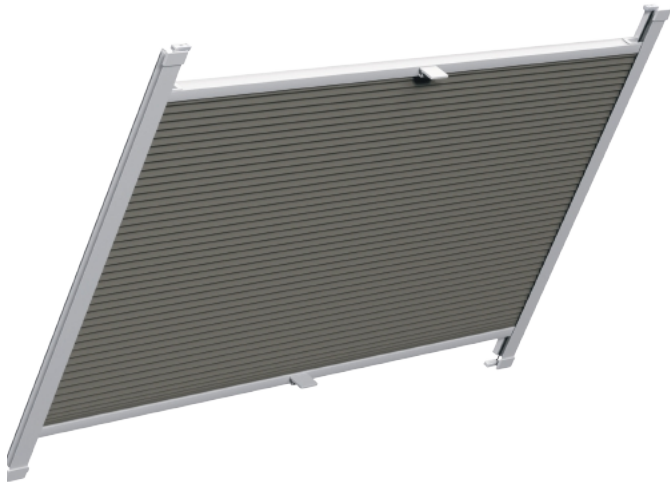




ROOFLIGHTS

with rail guides

WDF20



Description

- Tensioned system for rooflight installation with freely movable top and bottom rails made of aluminium (22 x 16.2 mm)
- Lateral profiles to reduce the light gap
- Adjustment by operating rod possible
- Variable stacking at top or bottom
- The supports pre-assembled by the window manufacturer must be removed

Profile colours	Profiles	Dimensions	System height	Stack height	
White		Max. width x height 150 x 160 cm			
Plastic colours		Min. width x height 23 x 20 cm			50 cm → max. 6.0 cm
White					100 cm → max. 7.5 cm
			150 cm → max. 9.0 cm		

WDFE20



Description

- Tensioned system for rooflight installation with top and bottom rails, freely movable down the sides and made of aluminium (27.2 x 29 mm)
- Aluminium guide rails down the sides (30.6 x 33 mm) with profile to cover the fastening points
- Guide rails flush mounted
- Operated via recessed grip in the operating rails
- The supports pre-assembled by the window manufacturer do not have to be removed
- Adjustment by operating rod possible
- Variable stacking at top or bottom

Profile colours	Profiles	Dimensions	System height	Stack height
<div style="background-color: white; padding: 2px; margin-bottom: 2px;">White</div> <div style="background-color: grey; padding: 2px;">Grey</div>		Max. width x height 150 x 150 cm or 120 x 190 cm Min. width 25 cm Min. height 40 cm		
<div style="background-color: white; padding: 2px; margin-bottom: 2px;">White</div> <div style="background-color: grey; padding: 2px;">Grey</div>		50 cm → max. 7.5 cm 100 cm → max. 8.5 cm 150 cm → max. 9.5 cm		